

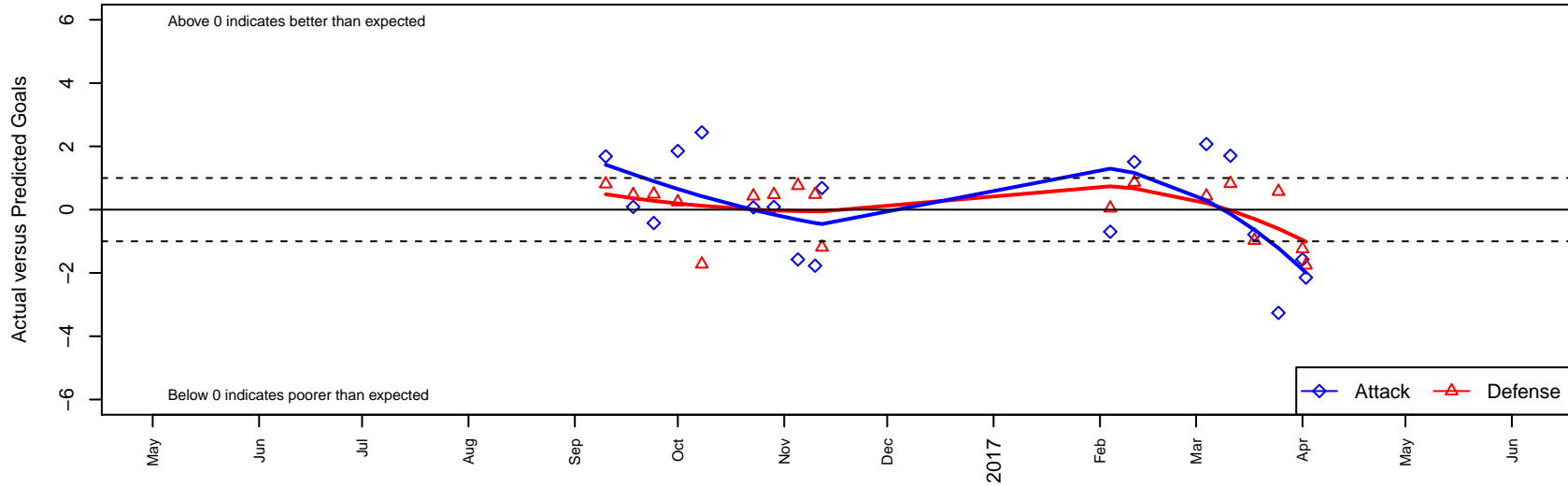
NPSA Titans White Mercer Island B06

Nowland Premier SA
 Mercer Island, WA
 B06 total strength=472
 attack=0.3 defense=0.34
 fall league = PSPL Copa Blue U11
 spr league = Spr PSPL Copa U11
 notes= B

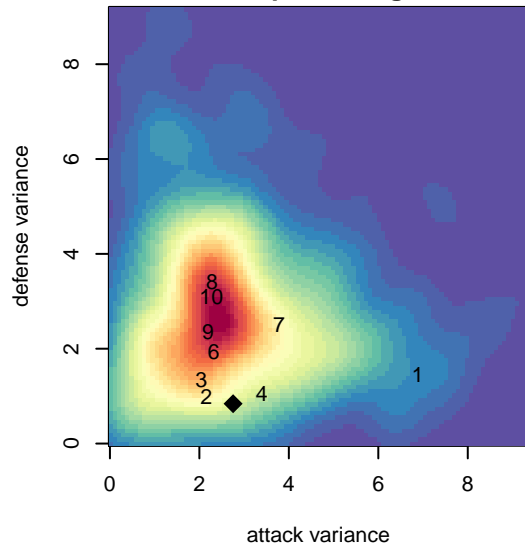
alt names used:
 NPSA B06 White Mercer Island
 NPSA B06 White Mercer Island

Venues played:
 2016 PSPL Copa Blue U11
 2016 Spr PSPL Copa U11

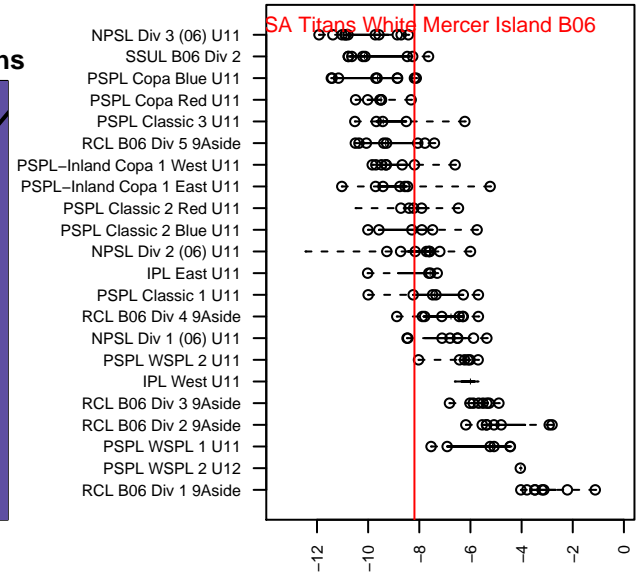
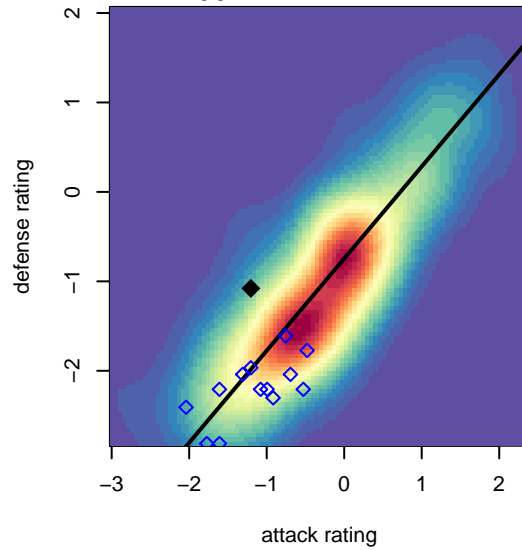
NPSA Titans White Mercer Island B06
 Dots are actual minus expected GF (blue circles) and GA (red triangles).
 Blue line is smoothed change in attack strength. Red is smoothed change in defense strength.



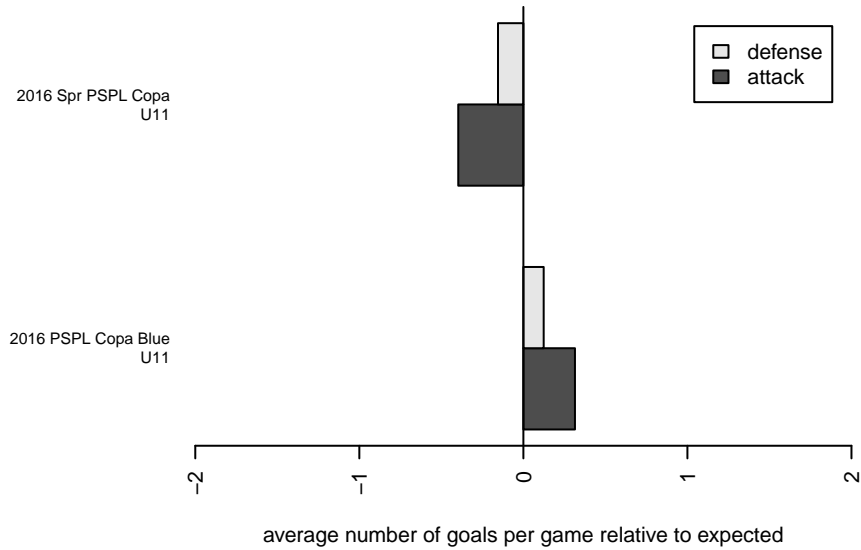
**attack and defense variance (black dot)
relative to other teams
and top 10 in region**



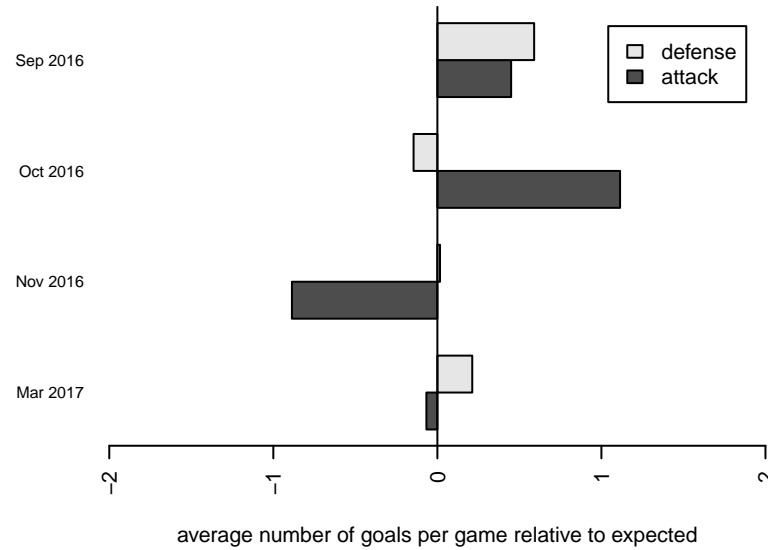
**attack and defense rating
relative to others at age
and all opponents in last 13 months**



Performance relative to 13 month average



Performance relative to 13 month average



| date | home | | away | | venue | pred.home | pred.away |
|-------------|-------------------------------------|---|-------------------------------------|---|-------------------------|------------------|------------------|
| 2017-04-02 | Cascade FC White B06 | 2 | NPSA Titans White Mercer Island B06 | 2 | 2016 Spr PSPL Copa U11 | 0.24 | 4.15 |
| 2017-04-01 | NPSA Titans White Mercer Island B06 | 1 | MRFC White B06 | 2 | 2016 Spr PSPL Copa U11 | 2.57 | 0.76 |
| 2017-03-25 | NPSA Titans White Mercer Island B06 | 0 | Highline Premier Heat Red B06 | 0 | 2016 Spr PSPL Copa U11 | 3.26 | 0.57 |
| 2017-03-18 | NPSA Titans White Mercer Island B06 | 2 | Emerald City FC Blue B06 | 2 | 2016 Spr PSPL Copa U11 | 2.78 | 1.03 |
| 2017-03-11 | Seattle Celtic Gold B06 | 0 | NPSA Titans White Mercer Island B06 | 4 | 2016 Spr PSPL Copa U11 | 0.82 | 2.30 |
| 2017-03-04 | Seattle Celtic Silver B06 | 0 | NPSA Titans White Mercer Island B06 | 7 | 2016 Spr PSPL Copa U11 | 0.43 | 4.93 |
| 2017-02-11 | NPSA Titans White Mercer Island B06 | 4 | Seattle Celtic Black B06 | 0 | 2016 Spr PSPL Copa U11 | 2.49 | 0.86 |
| 2017-02-04 | Shoreline Sportsverrou B06 | 1 | NPSA Titans White Mercer Island B06 | 1 | 2016 Spr PSPL Copa U11 | 1.05 | 1.70 |
| 2016-11-12 | NPSA Titans White Mercer Island B06 | 4 | ISC Gunners Select B06 | 2 | 2016 PSPL Copa Blue U11 | 3.32 | 0.81 |
| 2016-11-10 | Eclipse FC Aguilas B06 | 1 | NPSA Titans White Mercer Island B06 | 0 | 2016 PSPL Copa Blue U11 | 1.48 | 1.77 |
| 2016-11-05 | MRFC White B06 | 0 | NPSA Titans White Mercer Island B06 | 1 | 2016 PSPL Copa Blue U11 | 0.76 | 2.57 |
| 2016-10-29 | NPSA Titans White Mercer Island B06 | 5 | Impact FC White B06 | 0 | 2016 PSPL Copa Blue U11 | 4.91 | 0.47 |
| 2016-10-23 | NPSA Titans White Mercer Island B06 | 5 | Seattle Celtic Silver B06 | 0 | 2016 PSPL Copa Blue U11 | 4.93 | 0.43 |
| 2016-10-08 | NPSA Titans White Mercer Island B06 | 5 | West Narrows Blue B06 | 3 | 2016 PSPL Copa Blue U11 | 2.56 | 1.28 |
| 2016-10-01 | NPSA Titans White Mercer Island B06 | 6 | Cascade FC White B06 | 0 | 2016 PSPL Copa Blue U11 | 4.15 | 0.24 |
| 2016-09-24 | Kent City Black B06 | 1 | NPSA Titans White Mercer Island B06 | 3 | 2016 PSPL Copa Blue U11 | 1.49 | 3.42 |
| 2016-09-18 | Impact FC White B06 | 0 | NPSA Titans White Mercer Island B06 | 5 | 2016 PSPL Copa Blue U11 | 0.47 | 4.91 |
| 2016-09-10 | ISC Gunners Select B06 | 0 | NPSA Titans White Mercer Island B06 | 5 | 2016 PSPL Copa Blue U11 | 0.81 | 3.32 |